



A Fresh Approach to Weight Management



## Promoting Metabolic Health

### JAPAN BIO SCIENCE LABORATORY

#### CORPORATE OFFICE

1-4-40 Fukushima, Fukushima-ku,  
Osaka-city, Osaka 553-0003 Japan  
Tel: 81-72-631-1203  
Fax: 81-72-631-1203  
kaihatu@jbsl-net.com

#### JBSL-USA

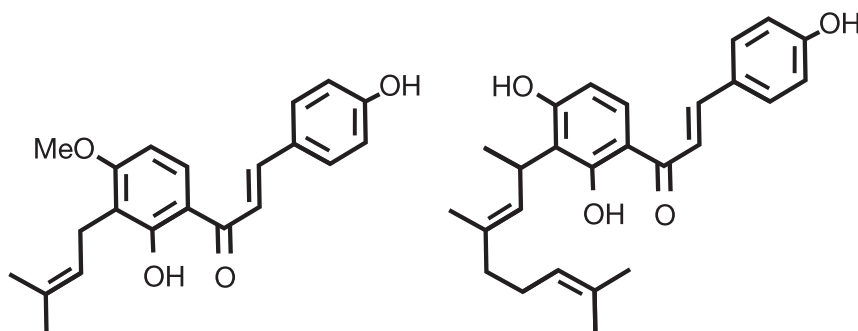
1547 Palos Verdes Mall, #131  
Walnut Creek, CA 94597  
Tel: (925) 938-2732  
Fax: (925) 407-2994  
sales@jbsl-net.com



Japan Bio Science Laboratory



- The sap from the Ashitaba plant (Binomial name *Angelica keiskei*) contains more than 20 potent and rare flavonoids known as **chalcones**.
- The chalcones abundantly found in Ashitaba, especially the 4-Hydroxyderricin and Xanthoangelol, may help reduce visceral fat.



3%: 4-Hydroxyderricin

5%: Xanthoangelol

- **ChalCurb®** is derived from the sap of the Ashitaba plant.
- **ChalCurb®** has more than 8.0% total chalcones, measured as 4-hydroxyderricin and Xanthoangelol, the two chalcones with the most potent clinical effects.
- JBSL is vertically integrated in the farming, harvesting and processing of its **ChalCurb®** production. JBSL maintains its own organic farms in Indonesia, and produces the powder at their facilities in Japan.

## About JBSL

Since its foundation in 1974, JBSL has been developing and manufacturing functional health food products under the corporate belief in the harmony of human beings and Mother Nature. Today, the safety and quality of food products are of higher concern than ever before. That is why our quality policy is the pursuit of safety from the viewpoint of the consumer.

### OUR CURRENT PRODUCTS INCLUDE:

Ashitaba Leaf Powder

Bacillus Subtilis Natto

Biozyme

ChalCurb®

Elastin

Kaboseed EX

NSK-SD®

Pro-K-Natto

Sesame Minerals

Vitamin K2

### JAPAN BIO SCIENCE LABORATORY

#### CORPORATE OFFICE

1-4-40 Fukushima, Fukushima-ku,  
Osaka-city, Osaka 553-0003 Japan  
Tel: 81-72-631-1203  
Fax: 81-72-631-1203  
kaihatu@jbsl-net.com

#### JBSL-USA

1547 Palos Verdes Mall, #131  
Walnut Creek, CA 94597  
Tel: (925) 938-2732  
Fax: (925) 407-2994  
sales@jbsl-net.com



Japan Bio Science Laboratory

## Research

Human, animal and in vitro studies suggest that chalcones have a variety of beneficial effects on the body's metabolic function. In fact, chalcones may help to:

- Reduce visceral fat (intra-abdominal fat)
- Support normal blood glucose levels
- Promote normal blood pressure
- Support circulation and overall cardiovascular health
- Support healthy cholesterol levels
- Decrease triglyceride levels
- Promote proper inflammatory response
- Support immune health through antioxidant activity
- Support healthy metabolism to help promote weight loss

## Safety

Aside from the long history of human consumption of the Ashitaba plant in traditional Japanese cuisine and medicine, JBSL's **ChalCurb®** has been the subject of numerous studies demonstrating its safety. ChalCurb® has a self-affirmed GRAS and is approved for use by Health Canada. Contact JBSL for references and citations.

*“Today, the safety and quality of food products are of higher concern than ever before. That is why our quality policy is the pursuit of safety from the viewpoint of the consumer.”*

## Harness the Power of Mother Nature

*To find out more about this exciting functional ingredient, visit our website or contact our offices for more information and ideas about how you can improve the profile of your nutritional products with the power of chalcones.*

[www.jbsl-net.com/english](http://www.jbsl-net.com/english)

These statements have not been evaluated by the Food and Drug Administration. This product is not intended to diagnose, treat, cure or prevent any disease.  
©2022 Japan Bio Science Laboratories, Inc. rev. 1022